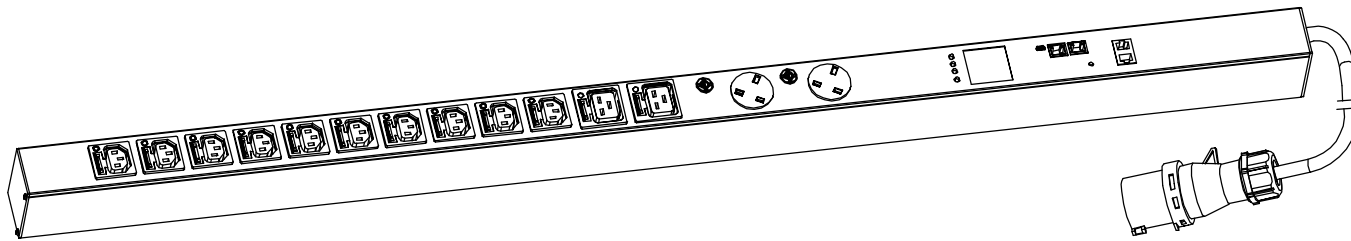
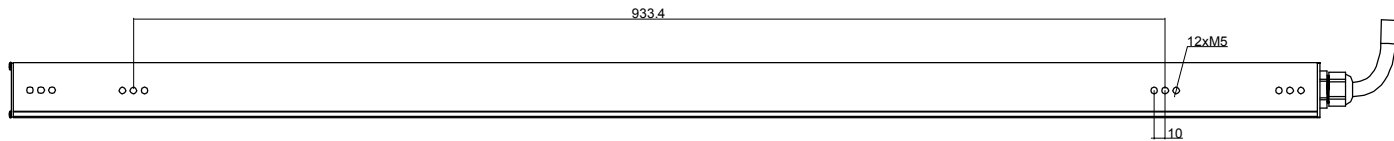
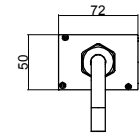
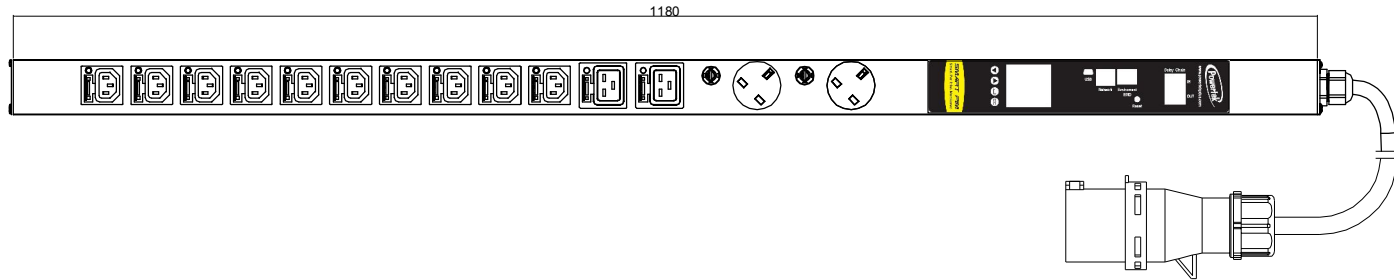



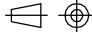
Copyright 2017 - excel

RoHS Compliant



<p>PIM Series</p> <p>Inlet monitoring Environmental monitoring</p>	<p>OUTPUT</p> <p>(10) IECC13 with LED (10A Rated) (2) IECC19 with LED (16A Rated) (2) UK Socket (13A Rated)</p>	<p>OPERATING TEMPERATURE</p> <p>0° to 60°C</p>
<p>INPUT</p> <p>250VAC 32A 50HZ 32A Commando plug 3M H07RN-F3G4.0mm Power lead</p>	<p>BRANCH CIRCUITS</p> <p>(2) 16A Fuse (12) 10A Fuse</p>	<p>MOUNTING ACCESORIES</p> <p>(2) IPFIX001 (2) IPFIX002 (2) IPFIX003</p>

Revisions		
Rev	Description	Date

DRAWING TYPE		BNENIECiFPIM4502100232AVTF	
 <small>(NO PERMISSION, NO CHANGING)</small>		unit=mm	
TECHNICAL STANDARD 1.IT11; 2.NO RUSTNESS 3.NO FLAW ON THE SURFACE		Housing	
FILLET R0.5 ANGLE ±0.5° FIRST ANGLE 		Aluminium Black Powder Coating Top Feed	
SCALE 1:3		DATE 16-10-2017	