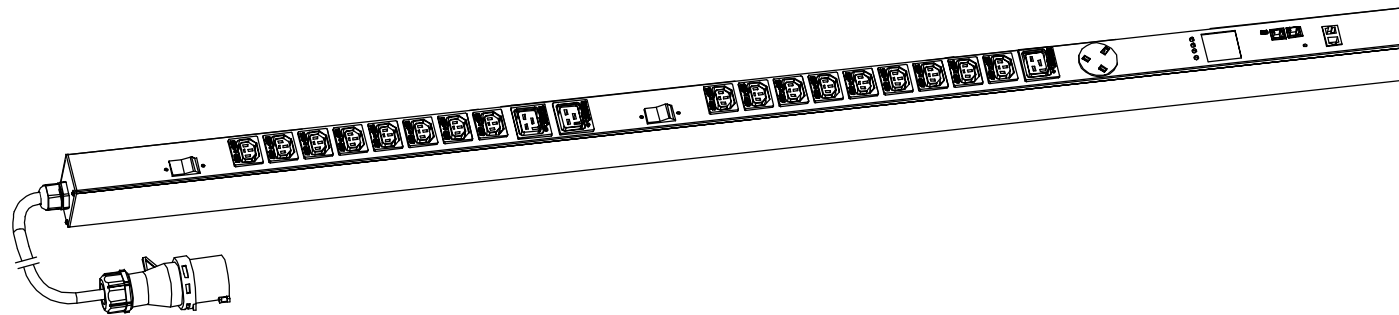
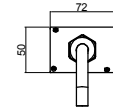
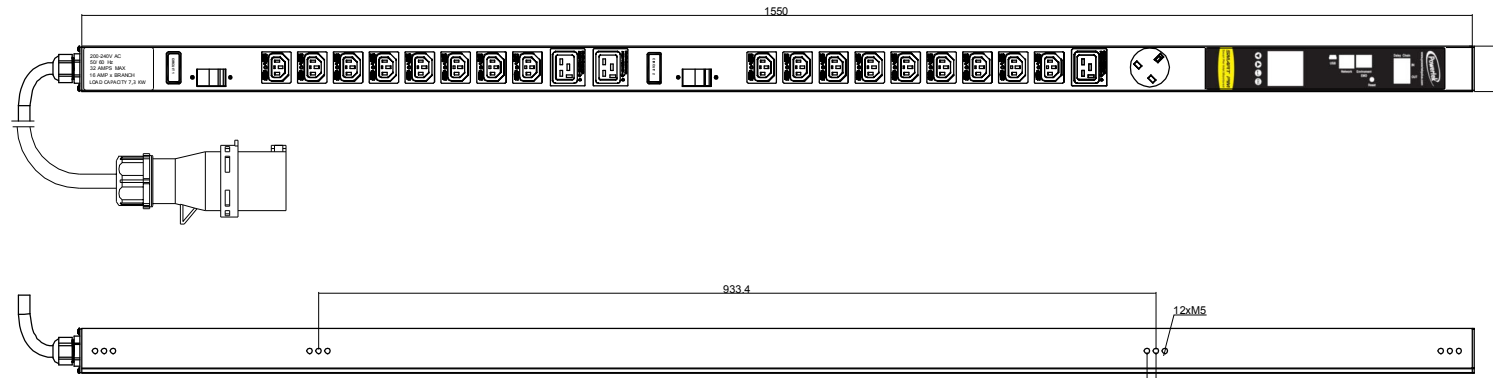




Copyright 2017 -

RoHS Compliant



<p><b>PIM Series</b></p> <p>Inlet power monitoring Environmental monitoring</p>	<p><b>OUTPUT</b></p> <p>(17) IEC 60320 C13 Lock (10A Rated) (3) IEC 60320 C19 Lock (16A Rated) (1) UK Socket (13A Rated)</p>	<p><b>OPERATING TEMPERATURE</b></p> <p>0° to 60°C</p>
<p><b>INPUT</b></p> <p>250VAC 32A 50HZ IEC60309 32A Commando plug 3M H07RN-F3G4mm² Power lead</p>	<p><b>BRANCH CIRCUITS</b></p> <p>(2) 1 Pole 16A Hydraulic-Magnetic Circuit Breaker</p>	<p><b>MOUNTING ACCESORIES</b></p> <p>(2) IPFIX001 (2) IPFIX002 (2) IPFIX003</p>

Revisions		
Rev	Description	Date

DRAWING TYPE		ENIECLKBNCBPIM4517030132AV	
 <small>(NO PERMISSION, NO CHANGING)</small>		<p><b>unit=mm</b></p>	
<p><b>TECHNICAL STANDARD</b></p> <p>1.IT11; 2.NO RUSTNESS 3.NO FLAW ON THE SURFACE</p>		<p><b>Housing</b></p> <p>Aluminium Black Powder coating</p>	
<p><b>FILLET</b> R0.5</p> <p><b>ANGLE</b> ±0.5°</p> <p><b>FIRST ANGLE</b></p> 		<p>DATE 24-02-2017</p>	
SCALE 1:3			