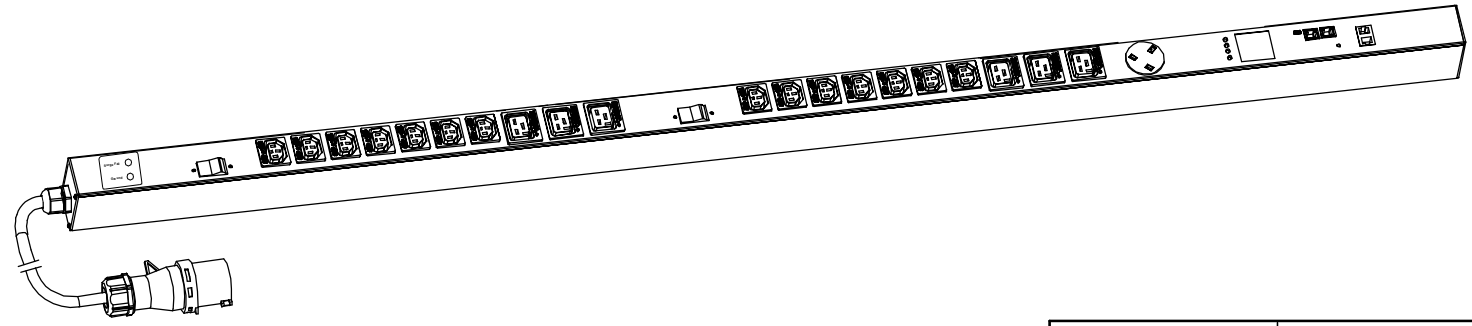
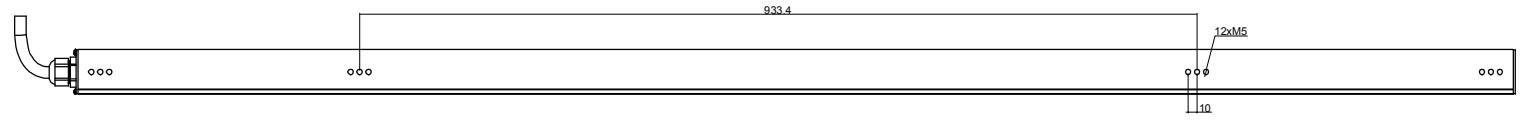
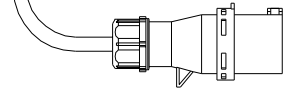
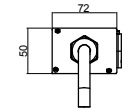
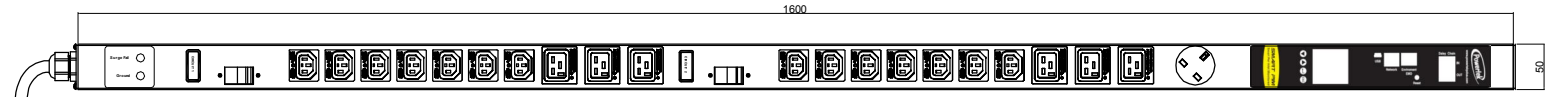



Copyright 2017 -

RoHS Compliant



<p>PIM Series</p> <p>Inlet power monitoring Environmental monitoring</p>	<p>OUTPUT</p> <p>(14) IEC 60320 C13 Lock (10A Rated) (6) IEC 60320 C19 Lock (16A Rated) (1) UK Socket (13A Rated)</p>	<p>OPERATING TEMPERATURE</p> <p>0° to 60°C</p>
<p>INPUT</p> <p>250VAC 32A 50HZ IEC60309 32A Commando plug 3M H07RN-F3G4mm² Power lead</p>	<p>BRANCH CIRCUITS</p> <p>(2) 1 Pole 16A Hydraulic-Magnetic Circuit Breaker (1) Surge Protector</p>	<p>MOUNTING ACCESORIES</p> <p>(2) IPFIX001 (2) IPFIX002 (2) IPFIX003</p>

Revisions		
Rev	Description	Date

DRAWING TYPE		ENIECLKBNVCBPIM4514060132AV	
 <small>(NO PERMISSION, NO CHANGING)</small>		Housing Aluminium Black Powder coating	
unit=mm			
TECHNICAL STANDARD 1.IT11; 2.NO RUSTNESS 3.NO FLAW ON THE SURFACE		SCALE 1:3 DATE 24-02-2017	
FILLET R0.5 ANGLE ±0.5°			
FIRST ANGLE 