

1 2 3 4 5 6 7 8

A

B

C

D

E

F

A

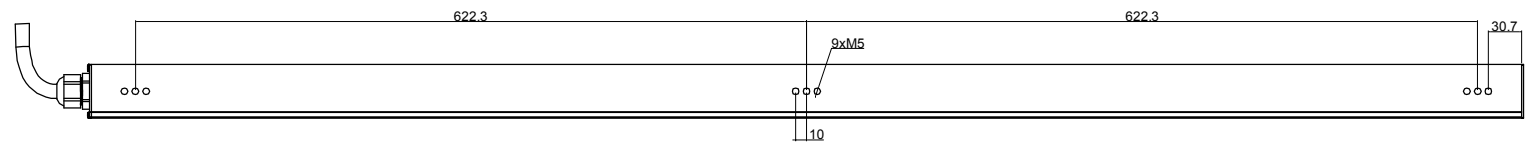
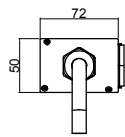
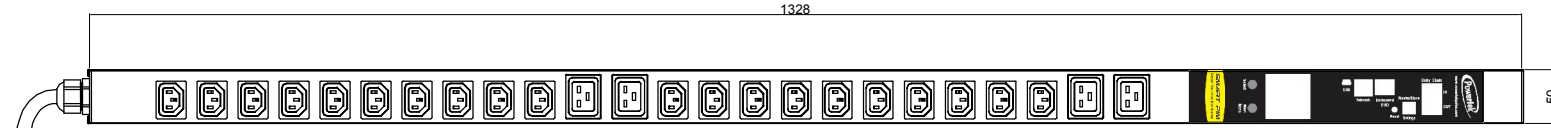
B

C

D

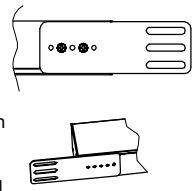
E

F



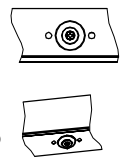
### Mounting Options

#### Option 1



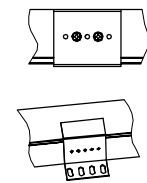
Use Screw to fixing two Mounting panel on the top and bottom side, then Fixing PDU by the mounting Panel

#### Option 2

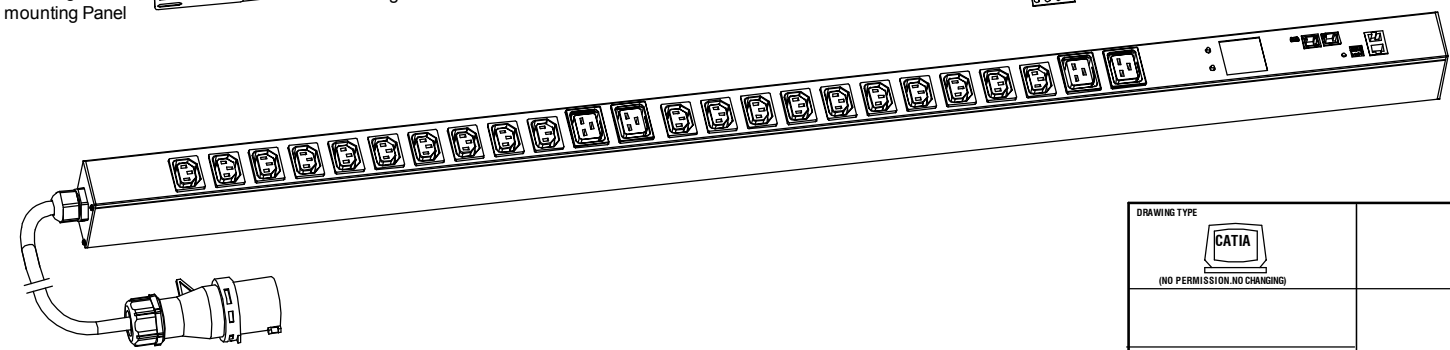


Use Screw to fixing Bottom Button on the back of PDU, you can choose one of 5 holes to fixing the PDU


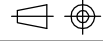
#### Option 3



Use Screw to fixing Mounting Panel on the back of PDU, Fixing the PDU by the Holes



- Outlets 20x IECC13 + 4xC19
- Indicator PIM (PMU+SNMP)
- Power Plug 16AMP COMMANDO Plug
- Power Cable H05VV-F 3G1.5mm<sup>2</sup>, 3M
- Current Rating 16A
- Voltage Rating 250VAC

DRAWING TYPE		ENIECPIM45200416A	
 (NO PERMISSION, NO CHANGING)		MATERIAL:	
TECHNICAL STANDARD 1.IT11; 2.NO RUSTNESS 3.NO FLAW ON THE SURFACE			
FILLET	R0.5		
ANGLE	±0.5°		
FIRST ANGLE			
		DATE 2014-07-08	
SCALE 1:3			

1 2 3 4 5 6 7 8