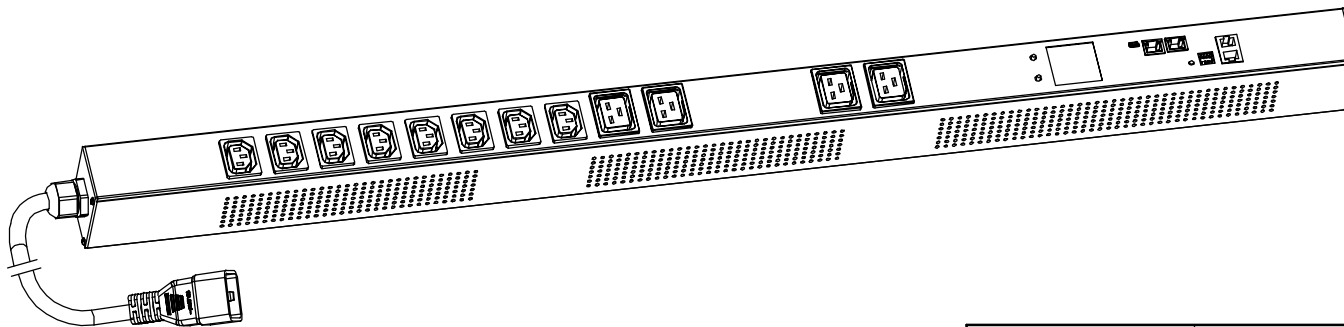
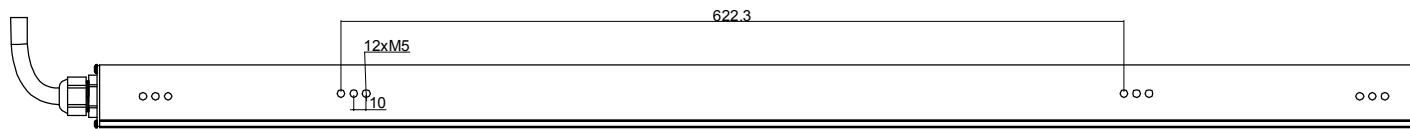
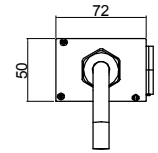
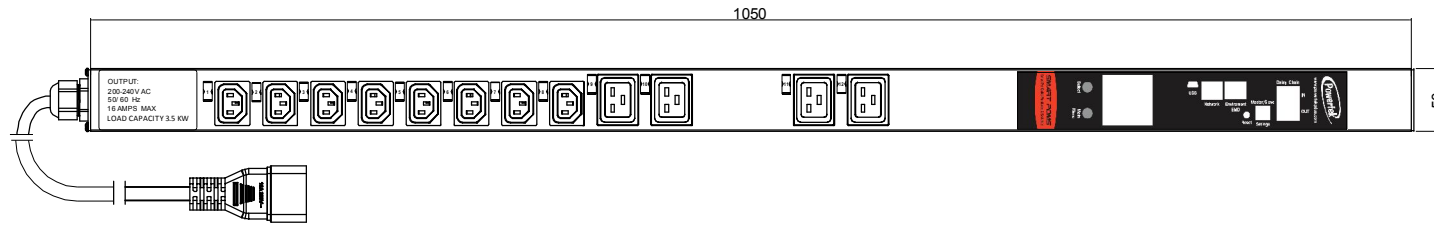




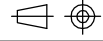
Copyright 2015 - Powertek

RoHS Compliant



POMS Series Inlet Power monitoring Per outlet monitoring and Switching Environmental monitoring	OUTPUT (8) IEC13 Socket (10A Rated) (4) IEC19 Socket (16A Rated)	OPERATING TEMPERATURE 0° to 60°C
	INPUT 250VAC 16A 50HZ IEC320 C20 plug 3M H05VV-F3G1.5mm² Power lead	BRANCH CIRCUITS (NONE)

Revisions		
Rev	Description	Date

DRAWING TYPE  (NO PERMISSION, NO CHANGING)		ENIECPOMS450804C20V	
unit=mm		Housing	Aluminium
TECHNICAL STANDARD 1.IT11; 2.NO RUSTNESS 3.NO FLAW ON THE SURFACE			Black Powder coating
FILLET	R0.5		
ANGLE	±0.5°		
FIRST ANGLE 			
SCALE 1:3		DATE 22-06-2015	