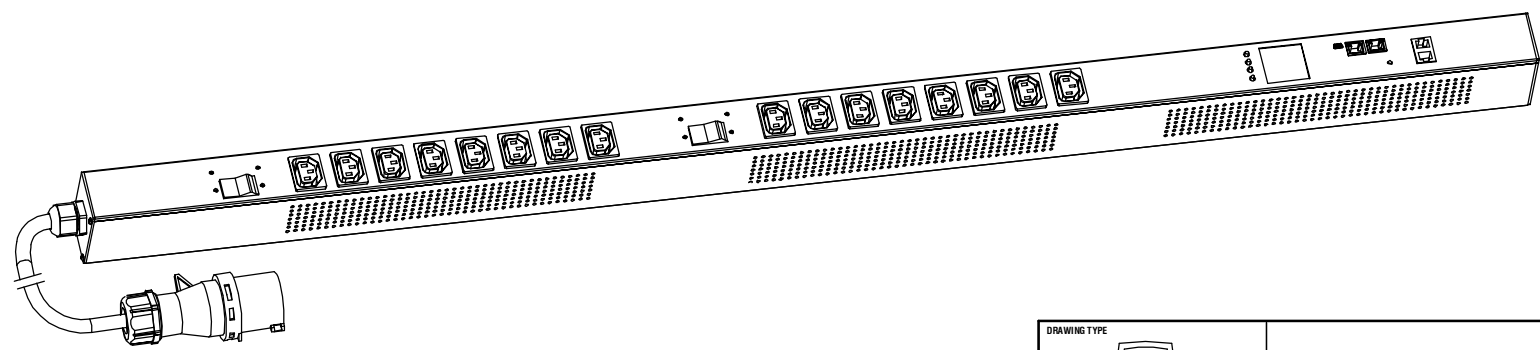
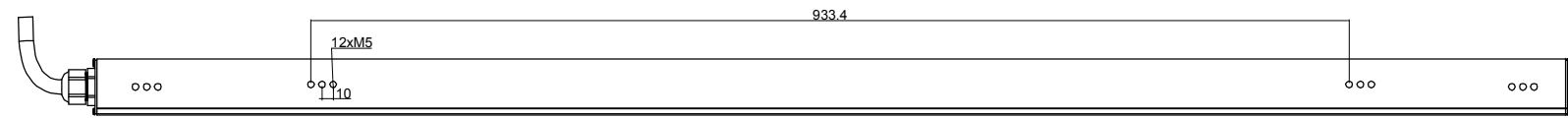
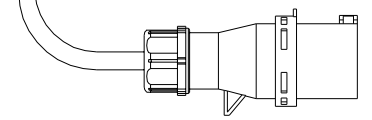
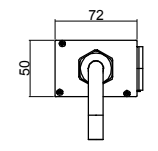
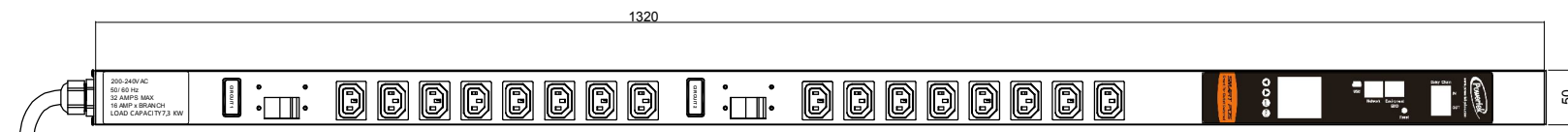


Copyright 2017 -

RoHS Compliant



<p>POS Series Inlet Power monitoring Per outlet Switching Environmental monitoring</p>	<p>OUTPUT (16) IECC13 Socket (10A Rated)</p>	<p>OPERATING TEMPERATURE 0° to 60°C</p>
<p>INPUT 250VAC 32A 50HZ IEC60309 32A Commando plug 3M H07RN-F3G4mm² Power lead</p>	<p>BRANCH CIRCUITS (2) 2 Pole Magnetic Hydraulic CB UL489 listed</p>	<p>MOUNTING ACCESORIES (2) IPFIX001 (2) IPFIX002 (2) IPFIX003</p>

Revisions		
Rev	Description	Date

DRAWING TYPE <small>(NO PERMISSION, NO CHANGING)</small>		ENCBPOS451632AV	
unit=mm		Housing	Aluminium
TECHNICAL STANDARD 1.IT11; 2.NO RUSTNESS 3.NO FLAW ON THE SURFACE			Black Powder coating
FILLET	R0.5		
ANGLE	±0.5°		
FIRST ANGLE 		DATE 10-05-2017	
SCALE 1:3			