

1 2 3 4 5 6 7 8

A

B

C

D

E

F

A

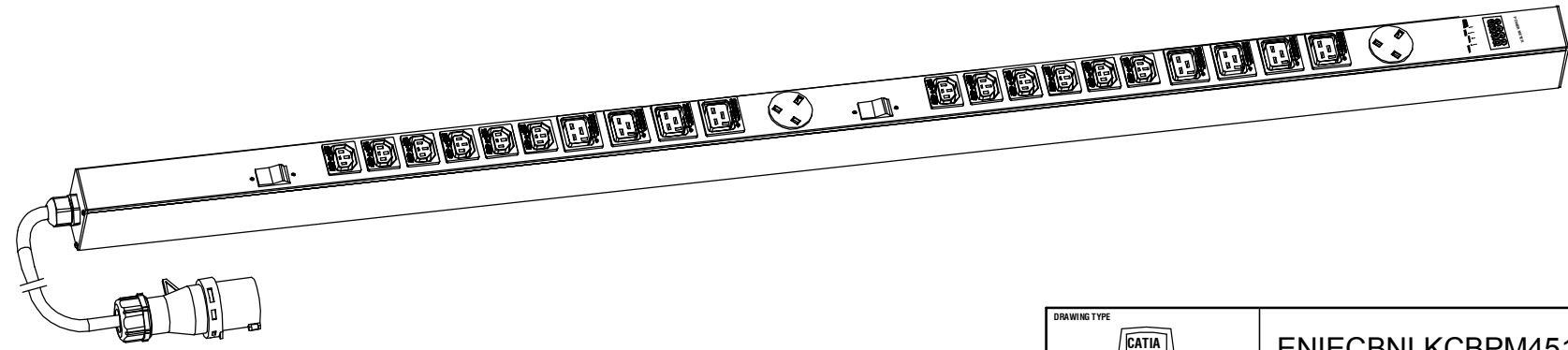
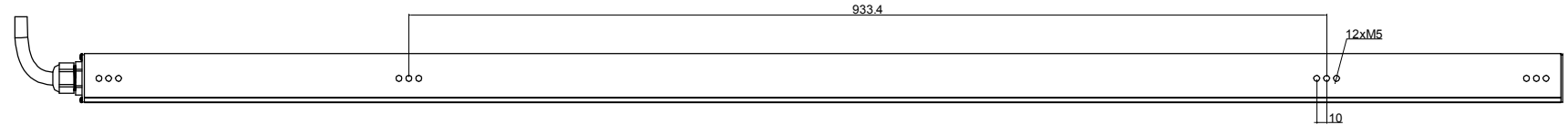
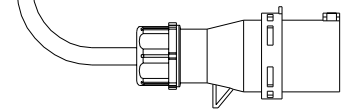
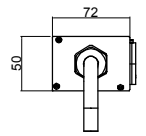
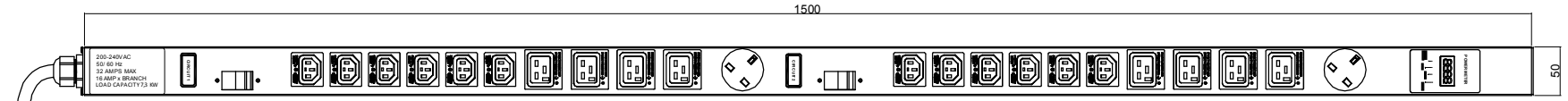
B

C


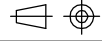
D

E

F



<p>PM Series</p> <p>Power Meter Chassis In Red Color</p>	<p>OUTPUT</p> <p>(12) IEC 60320 C13 Lock (10A Rated) (8) IEC 60320 C19 Lock (16A Rated) (2) UK Socket (13A Rated)</p>	<p>OPERATING TEMPERATURE</p> <p>30° to 140°F 0° to 60°C</p>
<p>INPUT</p> <p>250VAC 32A 50HZ IEC60309 32A Commando plug 3M H07RN-F3G4mm Power lead</p>	<p>BRANCH CIRCUITS</p> <p>(2) 1 Pole Magnetic Hidraulic CB 16A</p>	<p>MOUNTING ACCESORIES</p> <p>(2) IPFIX001 (2) IPFIX002 (2) IPFIX003</p>

<p>DRAWING TYPE</p>  <p>(NO PERMISSION, NO CHANGING)</p>		<p>ENIECBNLKCBPM4512080232AVR</p>	
<p>TECHNICAL STANDARD</p> <p>1.IT11; 2.NO RUSTNESS 3.NO FLAW ON THE SURFACE</p>		<p>MATERIAL:</p> <p>Aluminum Red Oxidation TX 304 1.5g/L</p>	
<p>FILLET</p>	<p>R0.5</p>		
<p>ANGLE</p>	<p>±0.5°</p>		
<p>FIRST ANGLE</p> 			
<p>SCALE 1:3</p>		<p>DATE 11-03-2016</p>	

1 2 3 4 5 6 7 8