

1 2 3 4 5 6 7 8

A

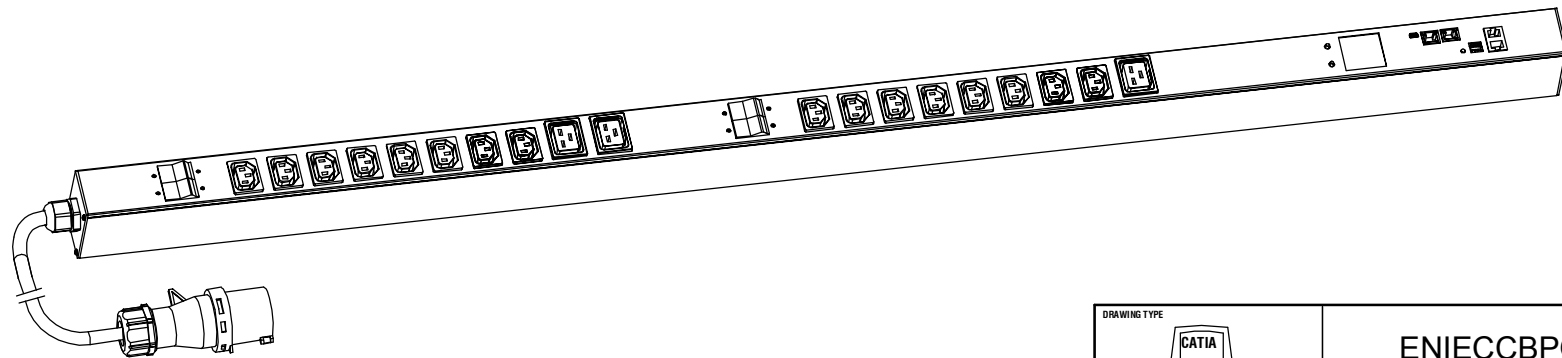
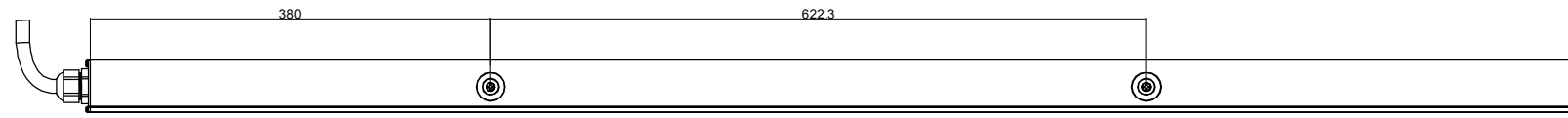
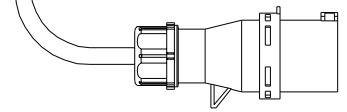
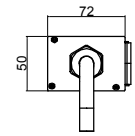
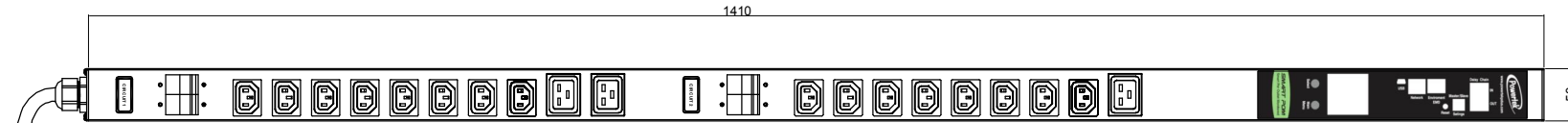
B

C


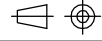
D

E

F



- Outlets 18x IECC13 + 3xC19
- Indicator POM (PMU+SNMP+Outlet Boards)
- Protector 2x16A Double Airpax Breaker
- Power Plug 32AMP COMMANDO Plug
- Power Cable H07RN-F 3G4.0mm<sup>2</sup>, 3M
- Current Rating 32A
- Voltage Rating 250VAC

DRAWING TYPE		ENIECCBPOM45160332AV	
 (NO PERMISSION, NO CHANGING)		MATERIAL:	
TECHNICAL STANDARD 1.IT11; 2.NO RUSTNESS 3.NO FLAW ON THE SURFACE			
FILLET	R0.5		
ANGLE	±0.5°		
FIRST ANGLE			
		DATE 2014-06-17	
SCALE 1:3			

1 2 3 4 5 6 7 8